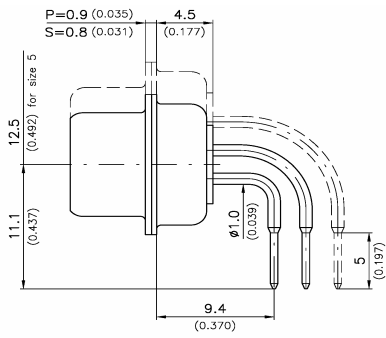
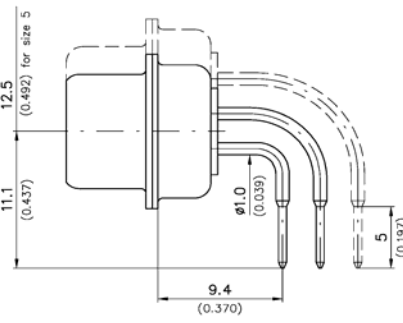


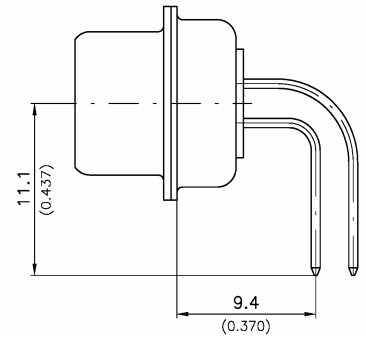
D Sub-Miniature Connectors Right Angle PCB Mounting
Termination Styles:- Turned Pin Contacts



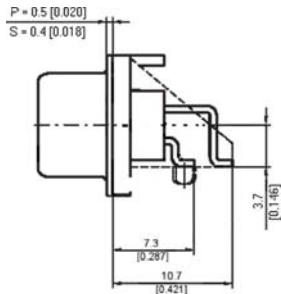
STYLE A
 Spacing 2.54mm (0.100")
 Pin Ø 0.6mm (0.024")



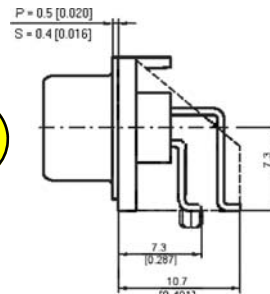
STYLE B
 Spacing 2.84mm (0.112")
 Pin Ø 0.6mm (0.024")



STYLE F
 Spacing 2.54mm (0.100")
 Pin Ø 0.6mm (0.024")



STYLE K—SMT



STYLE N

Ordering Code Straight & Right Angle

D S S - 15 - S D 1 (012)

Series:

D = D Subminiature

Product Gender:

P = Plus
 S = Socket

Product Version:

S = Standard version with screw machined captive contacts
 B = Low cost version with screw machined captive contacts
 L = Standard version with stamped and formed captive contacts
 A = SMT

No. of contacts:

9, 15, 25, 37, 50

Termination Style:

S = Solder Bucket
 P = Straight PCB
 W = Wire Wrap
 H = Straight Press Fit
 A = Right Angle PCB 2.54mm (0.100") spacing; pin Ø 0.6mm (0.024")
 B = Right Angle PCB 2.84mm (0.112") spacing; pin Ø 0.6mm (0.024")
 F - Right Angle PCB 21.54mm (0.100") spacing; pin Ø 0.6mm (0.024") over entire length
 J - PCB Edge Mount 1.6mm thick
 K - Low Profile (3.7mm PCB to centre line) SMT right angle
 N - Std. profile (7.3mm PCB to centre line) SMT right angle

Contact Plating:

A = 0.2 microns (0.000008") Au over nickel
 D = Gold flash over nickel

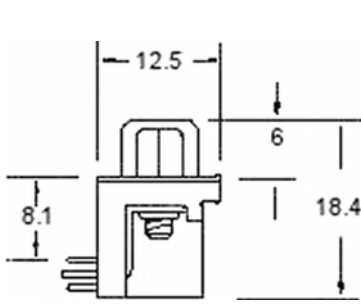
Mounting Style:

1 = Standard flanged mounting
 2 = Float mount rear panel mounting
 3 = Float mount front panel mounting
 12 - 4-40 UNC clinch nuts, rear mounted for other styles refer to examples see over

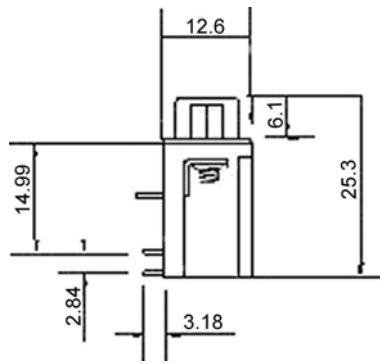
Modification Code:

(011) = Socket with tin plated shell
 (012) = Plug with tin plated indented shell

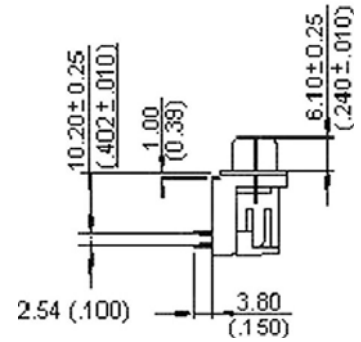
Right Angle PCB Mounting - Stamped and Formed



“Short American Footprint”
 Footprint 8.08mm (0.318”)
 Spacing 2.84mm (0.112”)
 Pin Ø 0.6mm (0.024)



“Long American Footprint”
 Footprint 14.99mm (0.590”)
 Spacing 2.84mm (0.112”)
 Pin Ø 0.6mm (0.024)



“European Footprint”
 Footprint 10.2mm (0.402”)
 Spacing 2.54mm (0.100”)
 Pin Ø 0.6mm (0.024)

Ordering Code

D S Y - 25 - B D 12 AD

Series:
 D = D Subminiature

Product Gender:
 P = Plus
 S = Socket

Product Version:
 E = Euro footprint - .402" (10.2mm)
 W = Short American footprint - .318" (8.08mm)
 Y = Long American footprint - .590" (14.99mm)

No. of contacts:
 9, 15, 25, 37

Termination Style:
 A = .100" (2.54mm) row to row
 B = .112" (2.84mm) row to row

Contact Plating:
 D = 0.000004" (0.1 microns) approx. Gold over 0.000050" nickel
 C = 0.000030" Gold over Nickel
 T = Tin Lead over the w hole contact surface
 F = Gold Flash on the mating surface w ith Tin lead tails
 H - 0.000030" Gold on the mating surface and Tin Lead on the tails

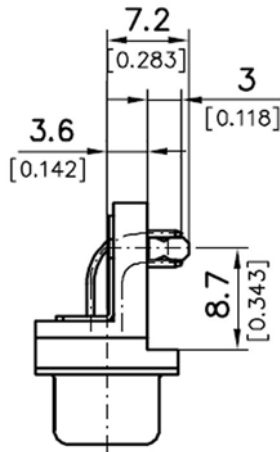
Mounting Style Vertical Face:
 12 = Clinch nut 4.40 UNC rear mounting
 17 - Hex. Nut 4.40 UNC (female screw lock)

Mounting Style - Horizontal Face:
 AA = Metal bracket w ith through hole
 AD = Metal bracket w ith short grounding lock clip

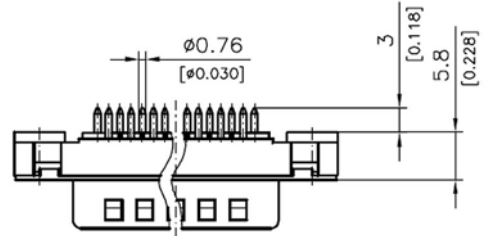
Low Profile D Subminiature Connectors

Due to their low profile the connectors can be used in typical applications such as in 19" assembly systems meeting DIN41494 standards.

Dimensions



Right Angle PCB Mount



Straight PCB Mount



Ordering Code

D P S - 25 - G D 1 (012)

Series:
D = D Subminiature

Product Gender:
P = Plus
S = Socket

Product Version:
S = Standard version with screw machined captive contacts
L - Standard version with stamped and formed captive contacts

No. of contacts:
9, 15, 25, 37, 50

Termination Style:
G = Right Angled Low Profile
(centre to PCB 3.6mm) 2.54mm (.1")
row to row 0.6mm (.024") dia.
T = Straight low profile (PCB to flange 5.8mm)
2.84 row -row

Contact Plating:
A = 0.2 microns (0.000008") Au over nickel
C = 0.000030" Au over nickel
D = Gold flash over nickel

Mounting Style:
27 = 4-40 UNC thread, front mounted
28 = M3 thread, front mounted

Modification Code:
(011) = Socket with tin plated shell
(012) = Plug with tin plated indented shell

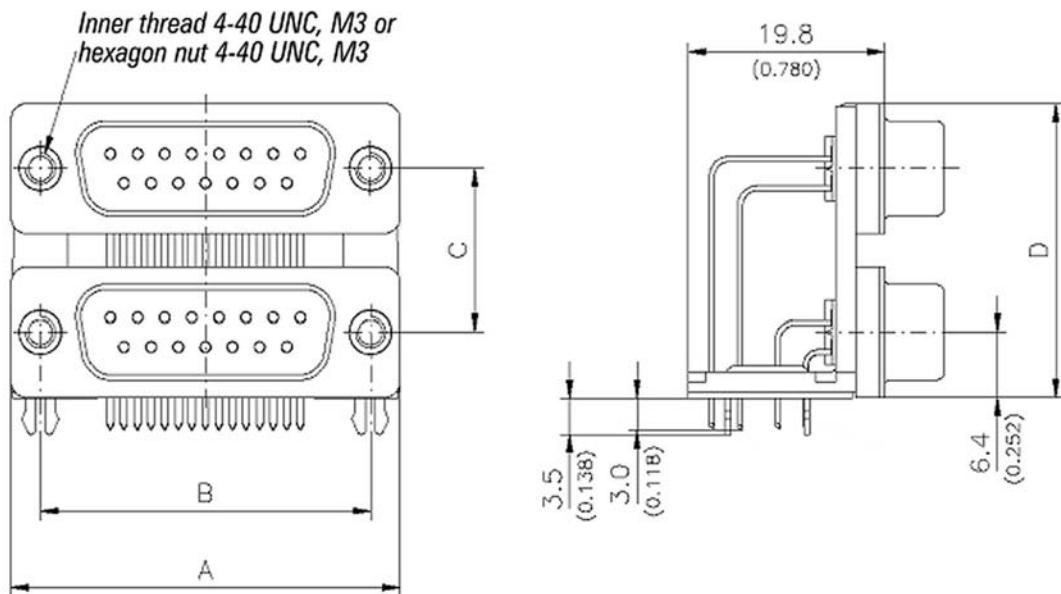
Dual Port connectors

Compatible with standard D Subminiature connectors

- Available in 3 height separation sizes: 22.86; 19.05; 15.88mm
- Standard shell sizes of 9, 15, 25 and 37 contacts
- Dual Port construction allows a higher number of connections per footprint area.
- Row to row spacing 2.84mm



Dimensions



No. of Contacts	A	B	C			D		
			Small	Medium	Large	Small	Medium	Large
2 * 9	30,8 (1.213)	25,0 (0.984)	15,88 (0.625)	19,05 (0.750)	22,86 (0.900)	28,48 (1.121)	31,65 (1.246)	35,46 (1.396)
2 * 15	39,1 (1.539)	33,3 (1.311)	15,88 (0.625)	19,05 (0.750)	22,86 (0.900)	28,48 (1.121)	31,65 (1.246)	35,46 (1.396)
2 * 25	53,0 (2.087)	47,04 (1.852)	15,88 (0.625)	19,05 (0.750)	22,86 (0.900)	28,48 (1.121)	31,65 (1.246)	35,46 (1.396)
2 * 37	69,3 (2.728)	63,5 (2.500)	15,88 (0.625)	19,05 (0.750)	22,86 (0.900)	28,48 (1.121)	31,56 (1.246)	35,46 (1.396)

Dual Port Connectors

Ordering Code

D C N - 09 09 A - A A 01 A A

Series:
D = D Subminiature

Product Gender:
A = Plug-Plug B = Plug-Socket
C = Socket-Plug D = socket-Socket
1st Gender - top connector

Product Version:
N = Dual Port

No. of contacts on top connector:
9, 15, 25, 37, 50

No. of connects on bottom connector:
9, 15, 25, 37, 50

Pitch between connectors:
A = 22.86
B = 19.05

Contact Termination Style:
A = Right angled stamped & formed short American footprint

Contact Plating:
A = 000008" Gold Flash over Nickel
B = 000020" Gold over Nickel
C = 000030" Gold over Nickel

Mounting Style - Vertical Face:
01 - Standard Flange Mounting
12 - Clinch nut mounting for right angled contacts, 4-40 UNC standard thread, rear mounting

Mounting Style - Horizontal Face:
A = Metal bracket with mounting holes, distances from connector flange face 7.75 and 15.62mm
B = Metal bracket with mounting holes, distances from connector flange face 9.50 and 16.26mm

Mounting Style - Horizontal Face:
A = With Board Lock
B = With Standard Thru Holes